

LG35C79



85RM



LG35C79 excels in high-yielding environments with good fertility; plant at slightly higher populations for best performance. Fungicide could be beneficial to stalks late season.

High yielding hybrid
Excellent emergence
Superior plant health



Mid Flowering

Medium-tall Plant Height

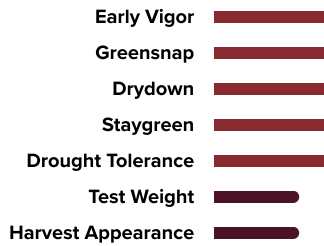
Medium Ear Height

Semi-flex Ear Type

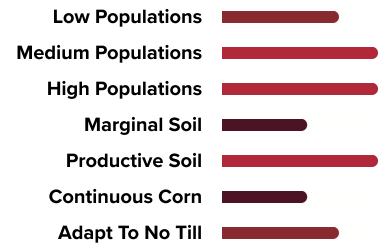
Good Stalk Strength

Good Root Strength

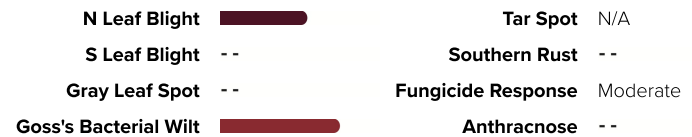
CHARACTERISTICS



MANAGEMENT



DISEASE TOLERANCE



Herbicide Interaction --

Growing Degree Days (GDD)

Pollen:1095 | **Silk:** 1091 | **BlackLayer:** 2150
Planting Rate: 30-36,000 Plants per Acre

NOTES

Icon Legend: New Hybrid Silage Proven Excellent Very Good Good Moderate

Scores and characteristics are assigned by LG Seeds based on comparisons with similar maturity LG and competitive products through internal field testing. Performance may vary from location to location and from year to year, as local growing, soil and weather conditions may vary. Growers should evaluate data from multiple locations and years whenever possible and should consider the impacts of these conditions on the grower's fields. Always read and follow IRM, where applicable, grain marketing, stewardship practices, and pesticide label directions. LG Seeds Design® and We Mean Business® are registered trademarks of AgReliant Genetics, LLC. All other trademarks are the property of their respective owners. Visit www.lgseeds.com/technology for full product use restrictions.



All orders and sales are subject to the LG Seeds Terms and Conditions of Sale, which include but are not limited to the Limitation of Warranty & Remedy and Agronomic Zone and Planting Year. The Terms and Conditions of Sale are subject to change from time to time without prior notice. Refer to <https://www.lgseeds.com/legal-terms> for the most up to date Terms and Conditions of Sale.

AgReliant Genetics, LLC has successfully completed current Excellence Through Stewardship® (ETS) audit requirements for our representative North American operations and has in place stewardship programs and quality management systems consistent with the Excellence Through Stewardship® (ETS) program.

Bayer is a member of Excellence Through Stewardship® (ETS). Bayer products are commercialized in accordance with ETS Product Launch Stewardship Guidance, and in compliance with Bayer's Policy for Commercialization of Biotechnology-Derived Plant Products in Commodity Crops. Commercialized products have been approved for import into key export markets with functioning regulatory systems. Any crop or material produced from this product can only be exported to, or used, processed or sold in countries where all necessary regulatory approvals have been granted. It is a violation of national and international law to move material containing biotech traits across boundaries into nations where import is not permitted. Growers should talk to their grain handler or product purchaser to confirm their buying position for this product.

Corteva Agriscience is a member of Excellence Through Stewardship® (ETS). Corteva Agriscience products are commercialized in accordance with ETS Product Launch Stewardship Guidance and in compliance with the Corteva Agriscience policies regarding stewardship of those products. In line with these guidelines, our product launch process for responsible launches of new products includes a longstanding process to evaluate export market information, value chain consultations, and regulatory functionality. Growers and end users must take all steps within their control to follow appropriate stewardship requirements and confirm their buyer's acceptance of the grain or other material being purchased. For more detailed information on the status of a trait or stack, visit www.biotradestatus.com.

Forage Genetics International, LLC ("FGI") is a member of Excellence Through Stewardship® (ETS). FGI products are commercialized in accordance with ETS Product Launch Stewardship Guidance, and in compliance with FGI's Policy for Commercialization of Biotechnology-Derived Plant Products in Commodity Crops. HarvXtra® Alfalfa with Roundup Ready® Technology has pending import approvals. GROWERS IN THE WESTERN STATES MUST DIRECT ANY PRODUCT PRODUCED FROM HARVXTRA® ALFALFA WITH ROUNDUP READY® TECHNOLOGY SEED OR CROPS (INCLUDING HAY AND HAY PRODUCTS) ONLY TO UNITED STATES DOMESTIC USE. Any crop or material produced from this product can only be exported to, or used, processed or sold in countries where all necessary regulatory approvals have been granted. It is a violation of national and international law to move material containing biotech traits across boundaries into nations where import is not permitted. Growers should talk to their grain handler or product purchaser to confirm their buying position for this product. Growers should refer to <http://www.biotradestatus.com/> for any updated information on import country approvals. Excellence Through Stewardship® is a registered trademark of Excellence Through Stewardship.


ALWAYS READ AND FOLLOW PESTICIDE LABEL DIRECTIONS. It is a violation of federal and state law to use any pesticide product other than in accordance with its labeling. NOT ALL formulations of dicamba or glyphosate are approved for in-crop use with Roundup Ready 2 Xtend® soybeans. NOT ALL formulations of dicamba, glyphosate or glufosinate are approved for in-crop use with products with XtendFlex® Technology. ONLY USE FORMULATIONS THAT ARE SPECIFICALLY LABELED FOR SUCH USES AND APPROVED FOR SUCH USE IN THE STATE OF APPLICATION. Contact the U.S. EPA and your state pesticide regulatory agency with any questions about the approval status of dicamba herbicide products for in-crop use with products with XtendFlex® Technology.

B.t. products may not yet be registered in all states. Check with your seed brand representative for the registration status in your state.

Refuge seed may not always contain the DroughtGard® trait. DroughtGard® Hybrids with RIB Complete® corn blend the refuge seed may not always contain DroughtGard® Hybrids trait. IMPORTANT IRM INFORMATION: Certain products are sold as RIB Complete® corn blend products, and do not require the planting of a structured refuge except in the Cotton-Growing Area where corn earworm is a significant pest. Products sold without refuge in the bag (non-RIB Complete) require the planting of a structured refuge. See the IRM/Grower Guide for additional information. Always read and follow IRM requirements.

Roundup Ready® 2 Technology contains genes that confer tolerance to glyphosate. Roundup Ready 2 Xtend® soybeans contain genes that confer tolerance to glyphosate and dicamba. Products with XtendFlex® Technology contains genes that confer tolerance to glyphosate, glufosinate and dicamba. Glyphosate will kill crops that are not tolerant to glyphosate. Dicamba will kill crops that are not tolerant to dicamba. Glufosinate will kill crops that are not tolerant to glufosinate. Contact your seed brand dealer or refer to the Bayer Technology Use Guide for recommended weed control programs. Contact your Bayer retailer, refer to the Bayer Technology Use Guide, or call the technical support line at 1-844-RRXTEND for recommended Roundup Ready® Xtend Crop System weed control programs. Seed containing a patented trait can only be used to plant a single commercial crop. It is unlawful to save and replant Roundup Ready 2 Yield® soybeans, Roundup Ready 2 Xtend® soybeans, and XtendFlex® soybeans. Additional information and limitations on the use of these products are provided in the Technology Stewardship Agreement and the Bayer Technology Use Guide: tug.bayer.com. U.S. patents for Bayer technologies can be found at the following webpage: cs.bayerpatents.bayer.com

Important: Always read and follow label and bag tag instructions; only those labeled as tolerant to glufosinate may be sprayed with glufosinate ammonium-based herbicides. More information about Duracade® is available at <http://www.biotradestatus.com/>.



Before opening a bag of seed, be sure to read, understand and accept the stewardship requirements, including applicable refuge requirements for insect resistance management, for the biotechnology traits expressed in the seed as set forth in the Technology/Stewardship Agreement that you sign. By opening and using a bag of seed, you are reaffirming your obligation and agreement to comply with the most recent stewardship requirements.



Seed products with the LibertyLink®(LL) trait are resistant to the herbicide glufosinate ammonium, an alternative to glyphosate in corn, and combine high-yielding genetics with the powerful, non-selective, post-emergent weed control of Liberty® herbicide for optimum yield and excellent weed control.



Corn trait technology incorporated into these seeds is commercialized under license from Syngenta Seeds, LLC. Herculex® Technology incorporated into these seeds is commercialized under license from Corteva Agriscience LLC.

Seeds containing the Enlist, Herculex and PowerCore traits are protected under one or more U.S. patents which can be found at: www.traitstewardship.com. The purchase of these seed traits include a limited license to produce a single crop in the United States. The use of seed from such a crop or the progeny thereof for propagation or seed multiplication or for production or development of a hybrid or different variety of seed is strictly prohibited. You acknowledge and agree to be bound by the terms and conditions of the following documents in effect at the time of planting of this seed: (i) the Corteva Agriscience Technology Use Agreement and (ii) the Product Use Guides for all technologies in this seed, including the Herbicide Resistance Management (HRM), and Use requirements. To plant Enlist, Herculex and PowerCore seed, you must have a limited license from Corteva Agriscience (or other appropriate affiliates). In consideration of the foregoing, Corteva Agriscience grants to the Grower the limited license to use its technology to produce only a single commercial crop in the United States under the terms and conditions set forth in the Technology Use Agreement in effect at the time of planting of this seed.

Always read and follow herbicide label directions prior to use: Enlist® products contain the Enlist trait that provides crop safety for use of labeled over-the-top applications of glyphosate, glufosinate and 2,4-D herbicides featuring Colex-D® technology when applied according to label directions. Following burndown, the only 2,4-D containing herbicide products that may be used with Enlist® crops are products that feature Colex-D technology and are expressly labeled for use on Enlist crops. 2,4-D products that do not contain Colex-D technology are not authorized for use in conjunction with Enlist products. Assure II herbicide is currently the only FOP herbicide for in-crop use with Enlist corn.

Enlist E3® soybean seeds containing the Enlist® trait can only be used to plant a single commercial crop. It is unlawful to save and replant Enlist E3® soybeans. Additional information and limitations on the use of these products are provided in the Corteva Agriscience Technology Use Agreement and Enlist® Soybean Product Use Guide. U.S. patents for Corteva Agriscience technologies can be found at the following webpage: www.corteva.us/Resources/trait-stewardship.html

ALWAYS READ AND FOLLOW PESTICIDE LABEL DIRECTIONS. Roundup Ready® crops contain genes that confer tolerance to glyphosate. Glyphosate herbicides will kill crops that are not tolerant to glyphosate. Roundup Ready® is registered trademarks of Bayer Group, used under license by Forage Genetics International, LLC. HarvXtra® is a registered trademark of Forage Genetics International, LLC. HarvXtra® Alfalfa with Roundup Ready® Technology is enabled with Technology from The Samuel Roberts Noble Foundation, Inc.

Important: Always read and follow label instructions. Some products may not be registered for sale or use in all states or counties. Please check with your local extension service to ensure registration status. Vayantis® is a registered trademark of a Syngenta Group Company.

IN THE FOLLOWING STATES, PURCHASE AND USE OF HARVXTRA® ALFALFA WITH ROUNDUP READY® TECHNOLOGY IS SUBJECT TO A SEED AND FEED USE AGREEMENT, REQUIRING THAT PRODUCTS OF THIS TECHNOLOGY CAN ONLY BE USED ON FARM OR OTHERWISE BE USED IN THE UNITED STATES: ARIZONA, CALIFORNIA, COLORADO, IDAHO, MONTANA, NEVADA, NEW MEXICO, OREGON, UTAH, WASHINGTON AND WYOMING (THE "WESTERN STATES"). IN ADDITION, DUE TO THE UNIQUE CROPPING PRACTICES DO NOT PLANT ROUNDUP READY® ALFALFA OR HARVXTRA® ALFALFA WITH ROUNDUP READY® TECHNOLOGY IN IMPERIAL COUNTY, CALIFORNIA, PENDING IMPORT APPROVALS AND UNTIL FORAGE GENETICS INTERNATIONAL, LLC (FGI) GRANTS EXPRESS PERMISSION FOR SUCH PLANTING.

The LG Seeds Design®, AgReliant Genetics®, the AgReliant Genetics Design®, Advantage Acro®, Golden Acres®, Golden Acres Genetics® and Design, and AgriShield® are trademarks of AgReliant Genetics, LLC. Acceleron®, DroughtGard®, RIB Complete®, Roundup Ready 2 Technology and Design®, Roundup Ready 2 Xtend®, Roundup Ready 2 Yield®, Roundup Ready®, SmartStax®, SmartStax® PRO, SmartStax® PRO RIB Complete, Trecepta®, Trecepta® RIB Complete®, VT Double PRO® and XtendFlex® are trademarks of Bayer Group. PowerCore multi-event technology developed by Corteva Agriscience and Monsanto. PowerCore is a registered trademark of Monsanto Technology LLC. The transgenic soybean event in Enlist E3® soybeans is jointly developed and owned by Corteva Agriscience and M.S. Technologies, L.L.C.™ Enlist, Enlist E3, the Enlist E3 logo, and **Colex-D are trademarks of Corteva Agriscience and its affiliated companies.** Herculex® and the Herculex Shield are trademarks of Corteva Agriscience LLC. Insect control technology provided by Vip3A is utilized under license from Syngenta Crop Protection AG. Agrisure®, Agrisure Viptera®, Artesian®, Duracade®, DuracadeViptera™, Viptera®, Viptera™Z3, E-Z Refuge® and Refuge Renew™ are trademarks of a Syngenta Group Company. Poncho®, Poncho®/Votivo®, Votivo®, LibertyLink®, Liberty®, and the Water Droplet Design® are trademarks of BASF Corporation. HarvXtra® and UltraCut™ are trademarks of Forage Genetics International, LLC. Respect the Refuge and Corn Design® and Respect the Refuge® are registered trademarks of National Corn Growers Association. Excellence Through Stewardship® is a registered trademark of Excellence Through Stewardship. All other trademarks are the property of their respective owners.

©2023 LG Seeds

